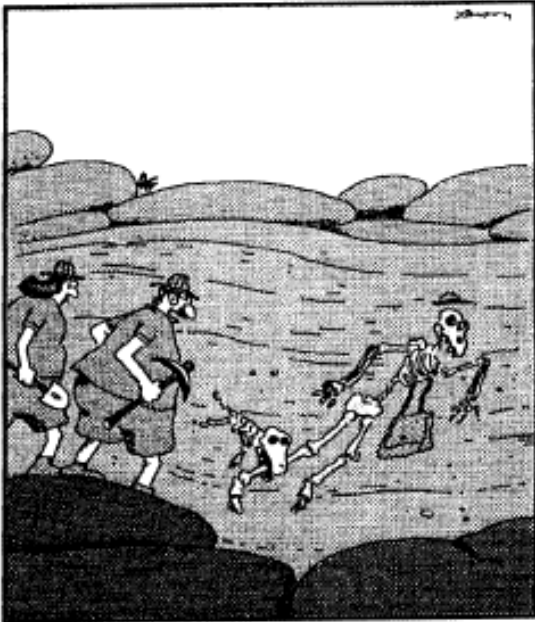


Understanding Science Cartoons: Modification for Evolution Studies

Let's examine the following cartoon and see how it applies.



"What a find, Ms. Dinkins! ... It's Mailman, all right—but remarkably, this specimen is fully intact, with the *Canus nipponicus* still attached."

To "read" a science cartoon, answer the following basic questions using complete sentences.

1. Identify the characters in the frame.
2. Identify the other objects/organisms in the frame.
3. Describe the actual action of the characters in the frame.
4. Relate the cartoon situation to a real life, human situation.
5. Rewrite the cartoon caption/dialogue.
6. Explain caption/dialogue using the cartoon frame.
7. Briefly state or explain the main science concept(s) the cartoon relates to.
8. Explain why the cartoon is "humorous."

1. Identify the characters in the frame.

- **A male archeologist standing on a rock**
- **A female archeologist standing on a rock**

2. Identify the other objects/organisms in the frame.

- **A skeleton of a human with a hat and a bag**
- **A skeleton of a small animal (dog?) with its mouth around the leg of the human**

3. Describe the actual action of the characters in the frame.

- **Archeologists are observing fossils**

4. Relate the cartoon situation to a real life, human situation.

- **Archeologists may find fossils in the wall of a rock**
- **Mailmen are bitten by dogs.**

5. Rewrite the cartoon caption/dialogue.

• **"What a find, Ms. Dinkins! ... It's a mailman, all right - but remarkably, this specimen is fully intact, with the *Canus nipponicus* still attached."**

6. Explain caption/dialogue using the cartoon frame.

- **The archeologists have found a human skeleton (a mailman with his bag and hat) and a small animal (a dog)**
- **The dog is attached to the leg of the human**
- **They are surprised to find the two sets of complete fossils for both organisms**

7. Briefly state or explain the main science concept(s) the cartoon relates to.

• **Fossils provide evidence for evolution in that there was life in the past on the planet which similar to life found today.**

8. Explain why the cartoon is "humorous."

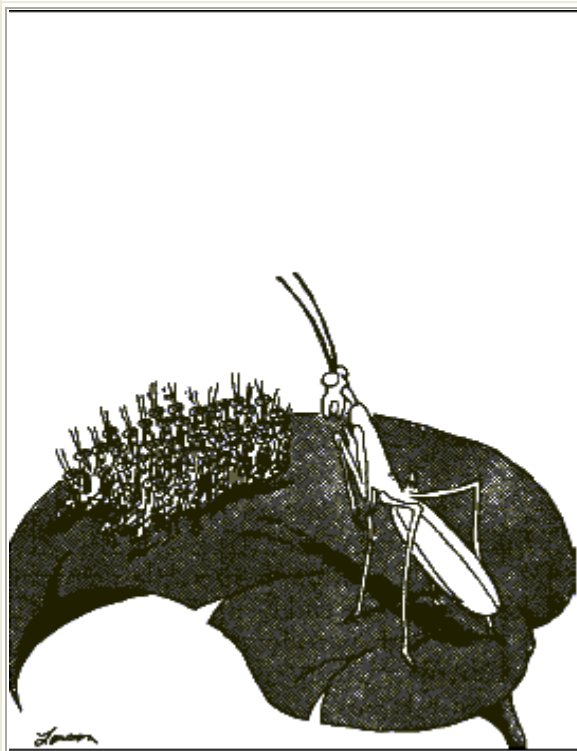
- **The species name of the dog, *nipponicus*, comes from the word "nip" which means a bite. The fossilized dog is biting the fossilized mailman's leg**
- **The dog is still attached to the mailman's leg. This is unusual since fossils usually break apart over time.**
- **The idea that there were prehistoric mailmen and they were also bitten by dogs**
- **The fact that there would be fossil evidence to support the *negative* relationship between mailmen and dogs.**

Name:

Date:

Period

Use the cartoon questioning technique "read" the following cartoon.



1. Identify the characters in the frame.

2. Identify the other objects/organisms in the frame.

3. Describe the actual action of the characters in the frame.

4. Relate the cartoon situation to a real life, human situation.

5. Rewrite the cartoon caption/dialogue.

6. Explain caption/dialogue using the cartoon frame.

7. Briefly state or explain the main science concept(s) the cartoon relates to.

8. Explain why the cartoon is "humorous."

Name:

Date:

Period

Use the cartoon questioning technique "read" the following cartoon.



'Listen... I'm fed up with this 'weeding out the sick and the old' business... I want something in its prime.'

1. Identify the characters in the frame.

2. Identify the other objects/organisms in the frame.

3. Describe the actual action of the characters in the frame.

4. Relate the cartoon situation to a real life, human situation.

5. Rewrite the cartoon caption/dialogue.

6. Explain caption/dialogue using the cartoon frame.

7. Briefly state or explain the main science concept(s) the cartoon relates to.

8. Explain why the cartoon is "humorous."